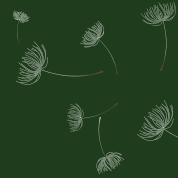




NOW LIFE IS EXACTLY WHERE YOU WANT IT TO BE!

ARTIK HAYAT  
TAM DA İSTEDİĞİNİZ YERDE!

 [tinyhouse21.com](http://tinyhouse21.com)



SİZ SADECE  
NEREDE YAŞAMAK  
İSTEDİĞİNİZE KARAR VERİN...

YOU JUST DECIDE WHERE YOU WANT TO LIVE...

 tinyhouse21.com

TINY HOUSE21, MİMAR GÖKÇEN ATMACA VE İNŞAAT MÜHENDİSİ YİĞİT ATMACA TARAFINDAN 2023 YILINDA ANTALYA'DA KURULMUŞTUR.

İnşaat, mimari – iç mimari proje alanındaki 16 yıllık tecrübesi ve alanında uzman mimari proje kadrosu ile birlikte tasarlanan; konut, otel, ofis, kafe ve modüler tip Tiny House21 modellerimiz müşterilerimizin isteklerine ve ihtiyaçlarına uygun olarak kişiselleştirilebilmektedir.

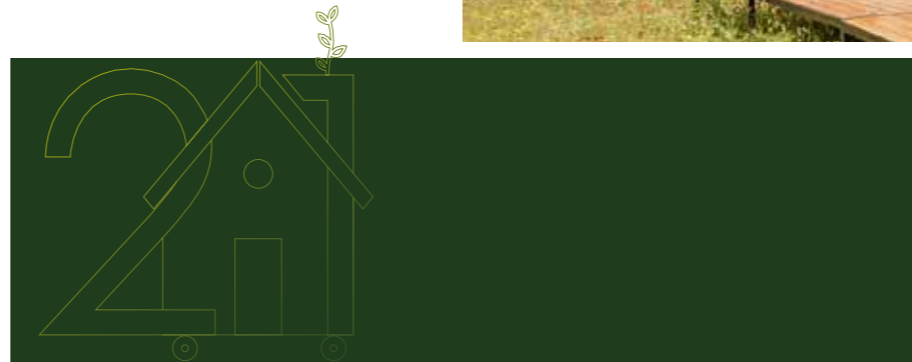
TINYHOUSE21 WAS FOUNDED BY ARCHITECT GÖKÇEN ATMACA AND CIVIL ENGINEER YİĞİT ATMACA IN ANTALYA IN 2023.

Designed with 16 years of experience in the field of construction, architecture – interior architecture projects and an expert architectural project staff in the field, our residential, hotel, office, cafe and modular type Tiny House21 models can be personalized according to the wishes and needs of our customers.

# SIRIUS

MODEL KONUT TIPI / MODEL RESIDENCE TYPE

[tinyhouse21.com](http://tinyhouse21.com)





Konut tipi Sirius model tiny house, hafif çelik iskelet ve şasi üzerine marin kontrplak, yalıtım ve thermowood-alüminyum kenet kaplanarak üretilir. 4 kişilik bir ailenin konforlu bir şekilde barınabileceği 4m yüksekliğinde, 2,55m genişliğinde ve 8m uzunluğunda; 1 adet ebeveyn yatak odası ve 1 adet çocuk odası asma katına sahip olan Sirius modelimizin brüt alanı 32 m<sup>2</sup> dir.



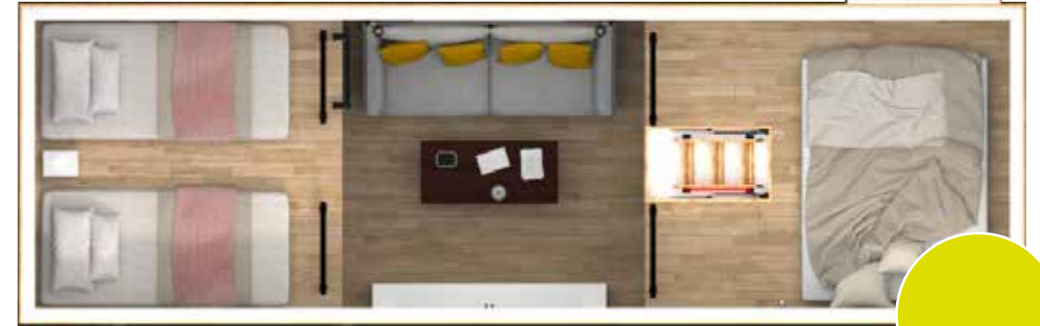
Residential type Sirius model tiny house is produced by coating marine plywood, insulation and thermowood-aluminium clamp on light steel frame and chassis. 4 meters high and 2.55 meters wide and 8 meters long, where a family of 4 can comfortably accommodate; The gross area of our Sirius model, which has 1 master bedroom and 1 child's room on the mezzanine, is 32 m<sup>2</sup>.



Zemin Kat / Ground Floor



Asma Kat / Mezzanine Floor



DOĞAYLA  
İÇ İÇE GEÇİRİLECEK  
BİR HAYAT İÇİN...

FOR A LIFE ENJOYED WITH NATURE...



# SIRIUS


## GENEL ÖZELLİKLER

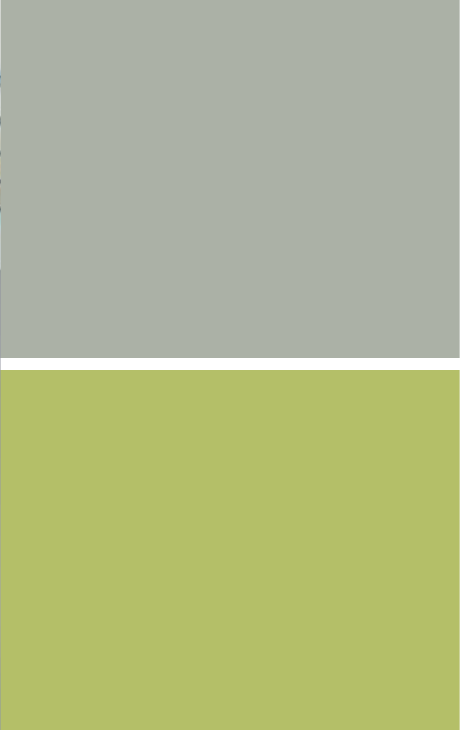
- Ebatlar: en 2,55 m / boy 8,00 m / yükseklik 4,00 m - 4 Kişilik
- Oturma Alanı+Mutfak: 14,76 m<sup>2</sup> / Banyo: 3,39 m<sup>2</sup> / Asma Kat 1: 5,80 m<sup>2</sup> / Asma Kat 2: 6,26 m<sup>2</sup>
- O2 TİP Uluslararası onay belgeli şasi - ISO 9001 - 14001 - TSE Kalite Belgesi

## GENERAL FEATURES

- Dimensions: width 2.55 M / length 8.00 M / height 4.00 M - For 4 People
- Living area+Kitchen: 14,76 m<sup>2</sup> / Bathroom: 3,39 m<sup>2</sup> / Mezzanine Floor 1: 5,80 m<sup>2</sup> / Mezzanine Floor 2: 6,26 m<sup>2</sup>
- TYPE O2 chassis with international approval certificate / ISO 9001 - 14001 - TSE Quality Certified



 tinyhouse21.com



DOĞAYA DÖNÜŞEN LEZZET...  
TASTE TRANSFORMING INTO NATURE...



# SIRIUS

EV KONFORU...  
HOME COMFORT...







İHTİYACINIZ OLAN HER ŞEY...  
EVERYTHING YOU NEED...



HUZURU OLDUĐUNUZ  
YERE GETİRİN!

BRING PEACE WHERE YOU ARE!



# PROCYON

MODÜLER TİP / MODULAR TYPE



tinyhouse21.com





Zemin Kat / Ground Floor



Procyon Model modüler sistem tiny house, hafif çelik iskelet üzerine marin kontrplak, yalıtım, thermowood ve alüminyum kenet kaplanarak üretilir. 4 kişilik bir ailenin konforlu bir şekilde barınabileceği 2+1 daire konforunda; 2 adet yatak odası, 1 adet banyosu ve kişiye özel depolama alanları bulunmaktadır. Geniş çalışma alanına sahip bir mutfak, yemek alanı ve oturma alanına sahiptir. Toplamda brüt alanı 49.6 m<sup>2</sup> olan Procyon modelimizi, modüler olması sayesinde dilediğiniz gibi planlayabiliriz.

Procyon Model modular system tiny house is produced by coating marine plywood, insulation, thermowood and aluminum clamp on a light steel frame. there are 2 bedrooms, 1 bathroom and individual storage areas in the comfort of a 2 + 1 apartment where a family of 4 can comfortably accommodate. It has a kitchen with a spacious work area, a dining area and a living area. We can plan our Procyon model, which has a gross area of 49.6 m<sup>2</sup>, as you wish, thanks to its modularity.



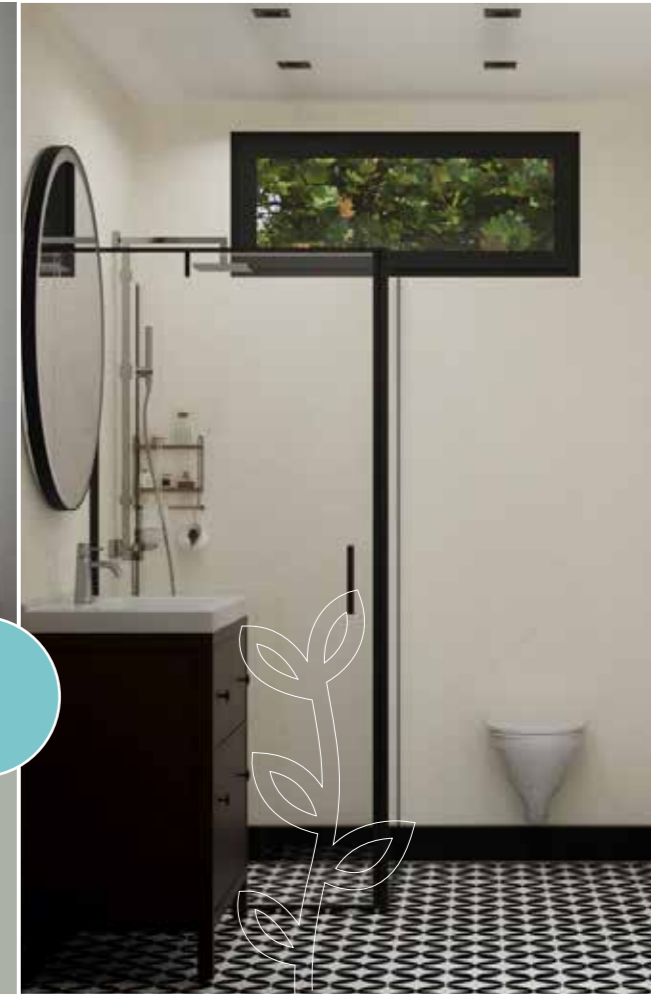
# PROCYON

## GENEL ÖZELLİKLER

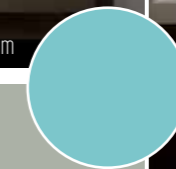
- Oturma Alanı+Mutfak: 27.12 m<sup>2</sup> / Banyo: 3.90 m<sup>2</sup> / Yatak Odası 1: 10.00 m<sup>2</sup> / Yatak Odası 2: 7.88 m<sup>2</sup> / Hol: 5.37 m<sup>2</sup>
- 2 adet 310x800x260 cm ebatında hafif çelik iskelet birleşimi

## GENERAL FEATURES

- Living area+Kitchen: 27.12 m<sup>2</sup> / Bathroom: 3.90 m<sup>2</sup> / Bedroom 1: 10.00 m<sup>2</sup> / Bbedroom 2: 7.88 m<sup>2</sup> / Hall: 5.37 m<sup>2</sup>
- 2 pcs 310x800x260 cm size light steel skeleton assembly



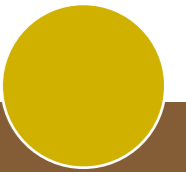
GENİŞ VE  
FERAĖ ZAMANLAR...  
WIDE AND SPACIOUS TIMES...





DOĞAYLA  
İÇ İÇE GEÇİRİLECEK  
BİR HAYAT İÇİN...

FOR A LIFE ENJOYED WITH NATURE...



# CAPELLA I

MODEL HOTEL TIPI / MODEL HOTEL TYPE

 tinyhouse21.com







Zemin Kat / Ground Floor



# CAPPELLA

Konaklama tipi Capella model tiny house; hafif çelik iskelet ve şasi üzerine marin kontrplak, yalıtım, ve thermowood-alüminyum kenet kaplanarak üretilir. 3.2 m yüksekliğinde, 2.55 m genişliğinde ve 8 m uzunluğundadır. Brüt alanı 20.4 m<sup>2</sup> olan Capella 1 modelimiz; şömineli oturma alanı, mutfak, banyo ve yatak odası mekanlarından oluşmaktadır.

Accommodation type Capella model tiny house; It is produced by coating marine plywood, insulation and thermowood-aluminum clamp on light steel frame and chassis. It is 3.2 m high, 2.55 m wide and 8 m long. Our Capella 1 model with a gross area of 20.4 m<sup>2</sup>; It consists of a living area with a fireplace, a kitchen, a bathroom and a bedroom.





#### GENEL ÖZELLİKLER

- Ebatlar: en 2,55 m / boy 8,00 m / yükseklik 3,20 m - 2 Kişilik
- Oturma Alanı+Mutfak: 8,86 m<sup>2</sup> / Banyo: 3,27 m<sup>2</sup> / Yatak Odası: 5,82 m<sup>2</sup>
- O2 TİP Uluslararası onay belgeli şasi - ISO 9001 - 14001 - TSE Kalite Belgesi

#### GENERAL FEATURES

- Dimensions: width 2.55 m / length 8.00 M / height 3.20 m - For 2 People
- Living area+Kitchen: 8.86 m<sup>2</sup> / Bathroom: 3.27 m<sup>2</sup> / Bedroom: 5.82 m<sup>2</sup>
- TYPE O2 chassis with international approval certificate / ISO 9001 - 14001 - TSE Quality Certified

# CAPELLA II

MODEL HOTEL TIPI / MODEL HOTEL TYPE

 tinyhouse21.com



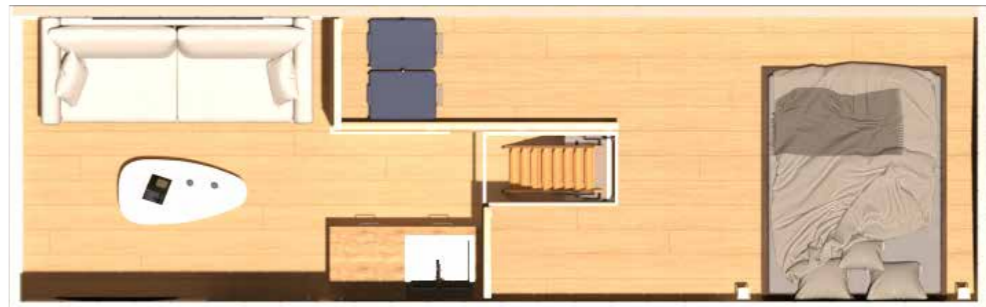


Zemin Kat / Ground Floor



Asma Kat / Mezzanine Floor

# CAPELLA II





#### GENEL ÖZELLİKLER

- Ebatlar: en 2,55 m / boy 8,00 m / yükseklik 4,00 m - 4 Kişilik
- Oturma Alanı+Mutfak: 9,39 m<sup>2</sup> / Banyo: 1,95 m<sup>2</sup> / Yatak Odası: 6,55 m<sup>2</sup> / Asma Kat: 10 m<sup>2</sup>
- O2 TİP Uluslararası onay belgeli şasi - ISO 9001 - 14001 - TSE Kalite Belgeli

#### GENERAL FEATURES

- Dimensions: width 2.55 M / length 8.00 M / height 4.00 M - For 4 People
- Living area+Kitchen: 9.39 m<sup>2</sup> / Bathroom: 1.95 m<sup>2</sup> / Bedroom: 6.55 m<sup>2</sup> / Mezzanine Floor: 10 m<sup>2</sup>
- TYPE O2 chassis with international approval certificate / ISO 9001 - 14001 - TSE Quality Certified



SİZ NEREDE  
ÇALIŞMAK İSTERSENİZ?

WHERE DO YOU WANT TO WORK?



# VEGAI

MODEL OFİS TİPİ / MODEL OFFICE TYPE

 tinyhouse21.com





Zemin Kat / Ground Floor

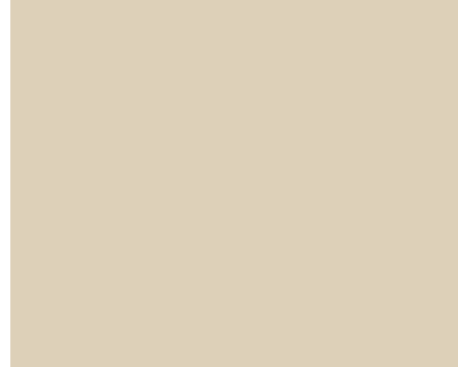


# VEGA 1

Ofis tipi Vega model tiny house hafif çelik iskelet ve şasi üzerine marin kontrplak, yalıtım, ve thermowood-alüminyum kenet kaplanarak üretilir. 3.2 m yüksekliğinde, 2.55 m genişliğinde ve 8 m uzunluğundadır. Brüt alanı 20.4 m<sup>2</sup> olan Vega 1 modelimiz; çalışma alanı, dinlenme alanı, mutfak, wc ve depo mekanlarından oluşmaktadır.

Office type Vega model tiny house is produced by coating marine plywood, insulation, and thermowood – aluminum clamp on a light steel frame and chassis. It is 3.2 m high, 2.55 m wide and 8 m long. Our Vega 1 model with a gross area of 20.4 m<sup>2</sup>; It consists of a working area, rest area, kitchen, bathroom and warehouse.





#### GENEL ÖZELLİKLER

- Ebatlar: en 2,55 m / boy 8,00 m / yükseklik 3,20 m
- Çalışma alanı: 14,86 m<sup>2</sup> / WC: 1,86 m<sup>2</sup> / Depo: 0,9 m<sup>2</sup>
- O2 TİP Uluslararası onay belgeli şasi - ISO 9001 - 14001 - TSE Kalite Belgeli

#### GENERAL FEATURES

- Dimensions: width 2.55 m / length 8.00 m / height 3.20 m
- Working area: 14.86 m<sup>2</sup> / WC: 1.86 m<sup>2</sup> / Storage: 0.9 m<sup>2</sup>
- TYPE O2 chassis with international approval certificate / ISO 9001 - 14001 - TSE Quality Certified

# VEGA II

MODEL OFİS TİPİ / MODEL OFFICE TYPE

 tinyhouse21.com





Zemin Kat / Ground Floor



# VEGA II

Ofis tipi Vega 2 model tiny house hafif çelik iskelet ve şasi üzerine marin kontrplak, yalıtım, ve thermowood-alüminyum kenet kaplanarak üretilir. 3.2 m yüksekliğinde, 2.55 m genişliğinde ve 10 m uzunluğundadır. Brüt alanı 25.5 m<sup>2</sup> olan Vega 2 modelimiz; 2 adet çalışma alanı, proje masası ve mutfak nişinden oluşmaktadır.

Office type Vega 2 model tiny house is produced by coating marine plywood, insulation, and thermowood – aluminum clamp on a light steel frame and chassis. It is 3.2 m high, 2.55 m wide and 10 m long. Our Vega 2 model with a gross area of 25.5 m<sup>2</sup>; It consists of 2 work areas, a project table and a kitchen niche.



#### GENEL ÖZELLİKLER

- Ebatlar: en 2,55 m / boy 10,00 m / yükseklik 3,20 m
- Çalışma Alanı: 23,00 m<sup>2</sup>
- O2 TİP Uluslararası onay belgeli şasi – ISO 9001 – 14001 – TSE Kalite Belgesi

#### GENERAL FEATURES

- Dimensions: width 2.55 m / length 10.00 m / height 3.20 m
- Working area: 23.00 m<sup>2</sup>
- TYPE O2 chassis with international approval certificate / ISO 9001 – 14001 - TSE Quality Certified





KAZANCINIZ  
ÇOK DAHA FAZLASI...

YOUR EARNINGS ARE MUCH MORE...

# REGULUS

MODEL KAFE TİPİ / MODEL COFFEE TYPE

 tinyhouse21.com





Zemin Kat / Ground Floor



# REGULUS



Kafe tipi Regulus model tiny house hafif çelik iskelet ve şasi üzerine marin kontrplak, yalıtım, ve thermowood-alüminyum kenet kaplanarak üretilir. 3.2 m yüksekliğinde, 2.55 m genişliğinde ve 8 m uzunluğundadır. Brüt alanı 20.4 m<sup>2</sup> olan Regulus modelimiz; servis mutfağı, WC, depo ve oturma alanlarından oluşmaktadır.

Cafe type Regulus model tiny house is produced by coating marine plywood, insulation, and thermowood-aluminum clamp on a light steel frame and chassis. It is 3.2 m high, 2.55 m wide and 8 m long. Our Regulus model with a gross area of 20.4 m<sup>2</sup>; It consists of a service kitchen, WC, storage and seating areas.



#### GENEL ÖZELLİKLER


- Ebatlar: en 2,55 m / boy 8,00 m / yükseklik 3,20 m
- İç mekan: 14,86 m<sup>2</sup> / Depo : 0,9 m<sup>2</sup> / WC : 1,86 m<sup>2</sup>
- O2 TİP Uluslararası onay belgeli şasi – ISO 9001 – 14001 – TSE Kalite Belgesi

#### GENERAL FEATURES


- Dimensions: width 2.55 m / length 8.00 m / height 3.20 m
- Interior space: 14.86 m<sup>2</sup> / Storage: 0.9 m<sup>2</sup> / WC: 1.86 m<sup>2</sup>
- TYPE O2 chassis with international approval certificate / ISO 9001 – 14001 - TSE Quality Certified



+90 **507 231 49 52**

 **tiny\_house\_21**

 **tinyhouse21.com**

 **info@tinyhouse21.com**

Yeşilova Mah. 1669 Sok. No:30 Muratpaşa/ANTALYA



Tüm modellerimiz 2 yıl garantilidir. / All our models are guaranteed for 2 years!